

Life&Times **Arts** **Calendar** **RealLife**

MONDAY, Dec. 1

Union YM-YWHA's senior men's club holds a **trip to the Showboat casino** in Atlantic City, leaving the Y at 8:30 a.m. The trip costs \$25 with \$25 cash back, a \$5 food voucher, and box lunch. Contact 908-688-2360.

Rabbi David Kalb leads a free discussion sponsored by Temple Emanu-El, Westfield, **Java and Judaism**, at 7:30 p.m. at Rockin' Joe Cafe, Westfield. Contact 908-232-6770 or cshane@tewnj.org.

WEDNESDAY, Dec. 3

Professional organizer Taryn Lamm presents **Getting Organized** at the Wilf Campus for Senior Living's Martin and Edith Stein Residence, Somerset, at 7 p.m. RSVP to 732-568-1155.

THURSDAY, Dec. 4

Temple Emanu-El, Westfield, presents **1,000 Years That Shook the World: Leaving Babylon, Returning to the Promised Land** today and Dec. 11, 7:30-9 p.m. All are welcome. Contact 908-232-6770 or cshane@tewnj.org.

SATURDAY, Dec. 6

Temple Sholom, Fanwood/Scotch Plains, holds a fund-raiser open to the community, **Sholom Rocks!**, at 7:30 p.m. at the Fanwood Presbyterian Church with the band Rewind. Tickets cost \$30; dessert and soft drinks will be served. Contact 908-889-4900 or sholom@sholomnj.org.

Comedian Jackie Mason's daughter **Sheba Mason performs** at the Union YM-YWHA's Comedy Coffee House at 8 p.m. Tickets are \$20/couple, \$15/member couple. Call 908-289-8112.

SUNDAY, Dec. 7

Jewish Federation of Central NJ holds its **Super Sunday** phonathon and community day, 9 a.m.-8 p.m. at the Wilf campus, Scotch Plains, featuring entertainment, Hanukka shopping, social action projects, and a blood drive. Contact 908-889-5335 or Inussbaum@jfedcnj.org.

MONDAY, Dec. 8

Author Dara Horn presents **Fieldnotes on Becoming a Jewish Novelist** at the Rut-

gers Student Center, New Brunswick, at 7:30 p.m., followed by a reception. RSVP to csjlrsvp@rci.rutgers.edu or 732-932-2033.

WEDNESDAY, Dec. 10

The Union YM-YWHA holds a **holiday book sale** through Dec. 21. Call 908-289-8112.

ONGOING

The YM-YWHA of Union County, Union, invites members of the community to **have lunch at the Y** weekdays for \$1.75 per person. Call 908-289-8112 between 8:30-10:30 a.m. the same day.

The JCC of Central NJ, Scotch Plains, offers **F.A.S.T. Play**, a class taught by a pediatric occupational therapist focusing on foundation and social skills training for preschoolers ages three-five, on Thursdays. The one-hour class for three-year-olds starts at 12:30 p.m.; for four- and five-year-olds, 1:30. Contact rbrous@jccnj.org or 908-889-8800, ext. 204.

The JCC of Central New Jersey, Scotch Plains, offers 30-minute **yoga classes for special needs children**, taught by fitness director

Karen Rosen in a one-on-one setting. Contact krosen@jccnj.org or 908-889-8800, ext. 224.

The JCC of Central New Jersey, Scotch Plains, offers a **cardio kickboxing class** on Tuesdays, 10:15-11:15 a.m., taught by two world-champion cardio kickboxing instructors. Contact dprice@jccnj.org or 908-889-8800, ext. 225, or visit www.jccnj.org.

YM-YWHA of Union County, Union, offers a **Beginners Everything You Want to Know About Computers** class on Tuesday nights at 7 p.m.

Shternie Block continues **Parsha with the Commentaries**, a free class for women, on Tuesdays at noon at the Union County Torah Center, Westfield. Contact 908-789-5252 or info@torahcenter.org.

The Union County Torah Center, Westfield, offers a **Mommy and Me program** for children ages 13-30 months, 9:30-10:30 a.m. on Wednesdays. The fee for each session is \$10; reservations are requested. Contact 908-789-5252 or soochie@torahcenter.org.

Temple Emanu-El, Westfield, holds a **Zimrat Shabbat** the third Friday of every month at 8:15 p.m. Contact 908-232-6770.

A jarring Mason? Comedienne follows in father's footsteps

RON KAPLAN
NJN Features Editor

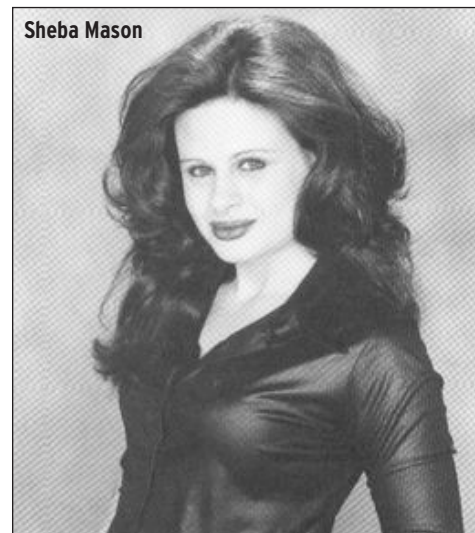
At least someone is benefiting from these tenuous financial times. "The good thing about the economy is that I'll have a lot to talk about," said comedian Sheba Mason. "I won't have a house, I won't have clothes, I won't have anything to eat, but I'll have a lot to say."

Mason doesn't have to deal with sibling rivalry. For her, it's parental rivalry. Sheba, still trying to establish her career, is following in the footsteps of her father, Jackie Mason. She'll bring her observational humor to the YM-YWHA of Union County on Saturday evening, Dec. 6.

"Because he's such a star, such a legend, and so amazing, I have him on such a pedestal in my mind that I couldn't begin to compete with him or compare myself to him. I do aspire to be on that level one day, but I like to keep a realistic viewpoint of where I am and where he is," she said.

Mason, 22, admitted that there had long been some animosity between her and her dad, who was out of her life for many years.

"It started very rocky, but lately we've been getting a lot closer, I'm happy to say. Last week I saw him on the street and he actually recognized me. And I know he did, because



the minute he did, he ran the other way."

Can we get a rim shot here?

Sheba's brand of humor is somewhat different from Jackie's; he frequently used his religion as material. Although she does include a little Yiddishkeit in her shtick, she said, "he's the master of that, and if I were to even attempt to copy him, it wouldn't be even close."

Mason, whose mother is playwright Ginger Reiter, has been doing stand-up for three years, but she's no stranger to the stage, having performed in one form or another since she was three years old.

Jackie has never seen his daughter perform. "If he wants to come, I'd love to have him come," she said.

But she couldn't help getting in one last, affectionate dig.

"I sometimes wish a better-looking comedian was my father — like Woody Allen or Rosie O'Donnell."

rkaplan@njewishnews.com

See Sheba

Sheba Mason will be the featured performer as the YM-YWHA of Union County, Union, presents its first Saturday Night Comedy Club, Dec. 6 at 8 p.m. The program includes an opening act by Eric Braunstein. Admission is \$20 per couple, with a \$5 discount for Y members. Reservations are strongly suggested. For more information, call the Y at 908-289-8112.

The Agenda**Weequahic memories at Jewish Museum**

The Jewish Museum of New Jersey, located in Congregation Ahavas Sholom, Newark, will host "Weequahic Memoirs," a traveling exhibition of the Jewish Historical Society of MetroWest.

JHS executive director and curator Linda Forghosh will be the keynote speaker at an opening reception on Sunday, Nov. 30, at 1 p.m. The exhibition runs from Nov. 30 through Feb. 15.

The exhibition features well-known venues such as Weequahic Park, Bergen Street merchants, Weequahic High School, Syd's Hot Dogs, the Weequahic Diner, and the Tavern restaurant, as well as original 1940s street signs, vintage clothing items, and sports memorabilia.

The heart of the exhibition is "The Great Map of Weequahic," which features family

names and addresses of former residences that were gathered by the JHS. A video documentary that continuously plays features four individuals recalling four decades of Jewish life in the neighborhood.

Museum hours are Tuesdays, Wednesdays, Thursdays, noon-5 p.m.; Sundays, 11 a.m.-4 p.m.; or by appointment.

To RSVP for the opening program or for more information, call Phil Yourish at 973-674-7003 or 973-485-2609.

**Arts grants for NJ organizations**

The New Jersey State Council on the Arts has announced the availability of guidelines and applications for the fiscal year 2010 Organizational Grant Program. Through this program, the council assists eligible organizations in serving NJ residents through arts programs and projects.

The following types of support are available:

- **General operating support** for NJ-based, nonprofit, arts-missioned organizations
- **General program support** for NJ-based nonprofit organizations, colleges, or units of local government to help support ongoing public arts programs

- **Arts education special initiatives** for school-based projects of arts nonprofits that make substantial contributions to quality arts education

- **Arts project support** for NJ-based nonprofit organizations, colleges, or units of local government to help support an arts event

- **Building arts participation** helps support projects that identify and address barriers to broadening, deepening, and/or diversifying arts participation.

Notices of Intent to Apply must be submitted through the Arts Council eGrant system by Dec. 12. For information about applying for these grants, visit njartscouncil.org.